



PCM

£1,900 PCM

Hobsons Place

London, E1 5HH

A 2-bedroomed flat conveniently located seconds from Brick Lane.

Set within a small, purpose-built block with lift facilities, this property features an open-plan reception room and kitchen with room for a table and chairs. There are two double bedrooms, with the benefit of a Juliet balcony to the larger bedroom. There's also a roomy family bathroom. The property has gas central-heating and double-glazed windows.

Brick Lane, snaking from Bethnal Green to Whitechapel, is one of the city's most loved streets and has a fascinating history, welcoming a diverse array of communities over the centuries. It is now very popular with bargain hunters, foodies and fashionistas.

The wider neighbourhood offers a real variety of restaurants, cafes and shops. Columbia Road Flower Market, Spitalfields, Hoxton Square and Broadway Market are all close by as well as some fantastic green escapes - Haggerston Park, London Fields, and Victoria Park - voted London's favourite outdoor space.

Unfurnished.

Council tax: Band B

5 weeks deposit: £2192.30

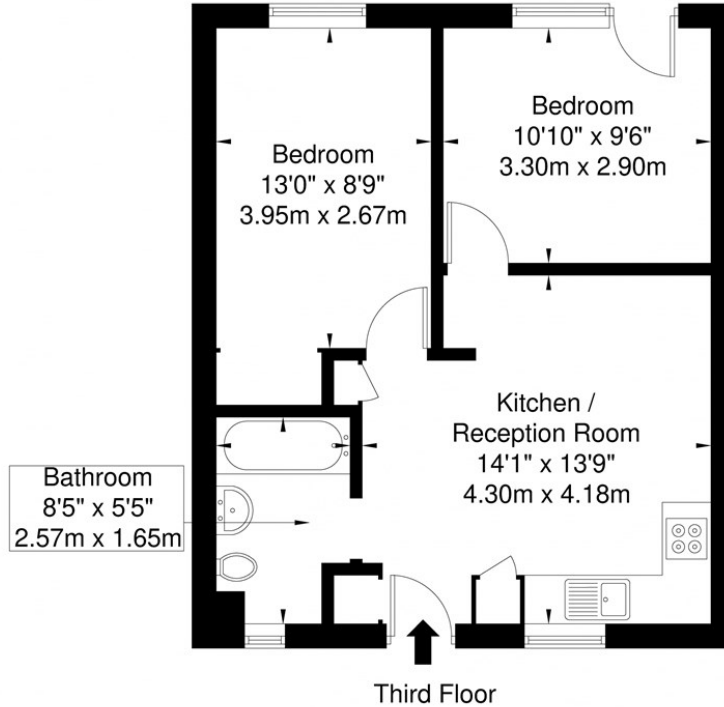
Available 5th of June





Hobson Place, Hanbury Street, E1 5HH

Approx. Gross Internal Area = 49.3 sq m / 530 sq ft



Ref

Copyright **BLEU PLAN**

Disclaimer : Floor plan measurements are approximate and are for illustrative purposes only. While we do not doubt the floor plan accuracy and completeness, you or your advisors should conduct a careful, independent investigation of the property in respect of monetary valuation.

Energy Efficiency Rating		
	Current	Potential
<i>Very energy efficient - lower running costs</i>		
(92 plus) A		
(81-91) B		
(69-80) C	79	79
(55-68) D		
(39-54) E		
(21-38) F		
(1-20) G		
<i>Not energy efficient - higher running costs</i>		
England & Wales	EU Directive 2002/91/EC	

Agents Note: Whilst every care has been taken to prepare these particulars, they are for guidance purposes only. All measurements are approximate and are for general guidance purposes only and whilst every care has been taken to ensure their accuracy, they should not be relied upon and potential buyers/tenants are advised to recheck the measurements

OFFICE ADDRESS
88 Cheshire Street
London
E2 6EH

OFFICE DETAILS
0207 739 6969
info@peachproperties.com
www.peachproperties.com